

Common of a Confessor Bishop: Mass II

Introit

Intr. 3.
S

A- cer-dó- tes tú- i, * DÓ-mi-ne, ín-du- ant
justí- ti- am, et sáncti tú- i ex-súltent :
propter Dá- vid sér- vum tú- um, non a-vér-
tas fá- ci- em Chrí- sti tú- i. *T. P.* Alle-lú-ia, al-
le- lú- ia. *Ps.* Meménto Dómine Dá-vid : * et ómnis
mansu-e-tú- di-nis é-jus. Gló-ri-a Pátri. E u o u a e.

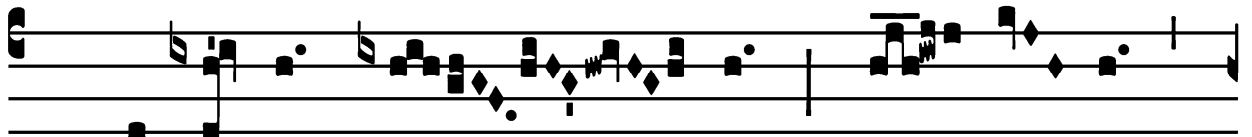
Common of a Confessor Bishop: Mass II

Gradual

Grad.

1.

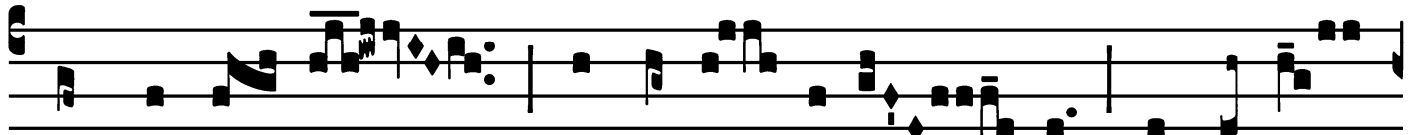
S



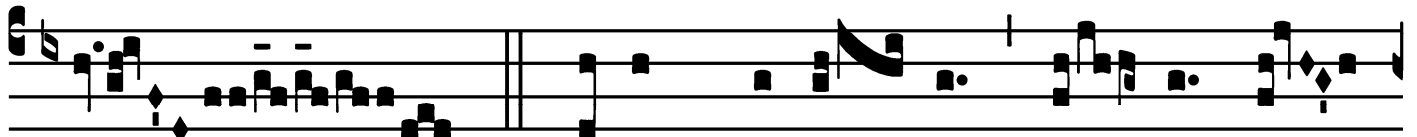
Acerdó-tes * é- jus ín- du- am



sa- lu- tá- ri : et



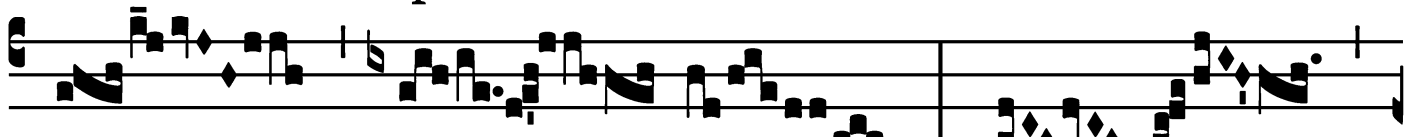
sáncti é- jus exsulta- ti- ó- ne exsultá-



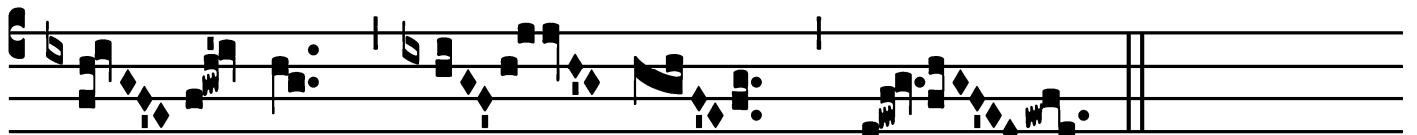
bunt. *∇*. Illuc prodú- cam cór- nu Dá-



vid : pará- vi lu-



cér- nam Chrí-



sto * mé- o.

Common of a Confessor Bishop: Mass II

Alleluia

1.
A Lle- lú- ia. * *ij.*

∇. Ju-rá- vit Dó- minus, et non pœni-
té-bit é- um : Tu es sa-cér- dos in æ-tér- num,
se- cúndum ór- di-nem * Melchí-
se- dech.

Common of a Confessor Bishop: Mass II

Second Alleluia

(In Paschal Time)

4.
A Alle-lú-ia.*

Ÿ. Amá- vit é- um DÓ-mi-
nus, et orná- vit é- um : stó-lam gló-
ri- æ índu- it * é-
um.

Common of a Confessor Bishop: Mass II

Tract

Tract.

8.

B

E-á- tus vir, * qui tímet Dó- mi-

num : in man-dá- tis é- jus

cú- pit ni- mis. ∇ . Pót- ens in térra

é-rit sémen é- jus : ge-ne- rá- ti-o re- ctó-

rum be- ne- di-cé-tur.

∇ . Gló- ri- a et di-ví-ti-æ in dómo é- jus : et

ju- stí- ti- a é- jus má- net * in sá- cu- lum

sá- cu- li.

Common of a Confessor Bishop: Mass II

Offertory

Offert. 2.

V

E- ri- tas mé- a * et mi-se-ri-cór- di-

a mé- a cum í- pso : et in nómi- ne mé-

o exaltábi- tur córnu é- jus. *T.P.* Alle-

lú- ia.

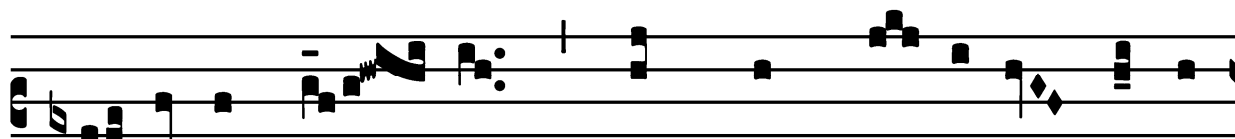
Common of a Confessor Bishop: Mass II

Communion

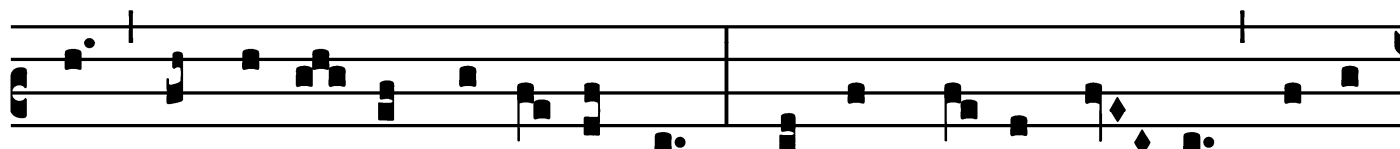
Comm.

3.

B



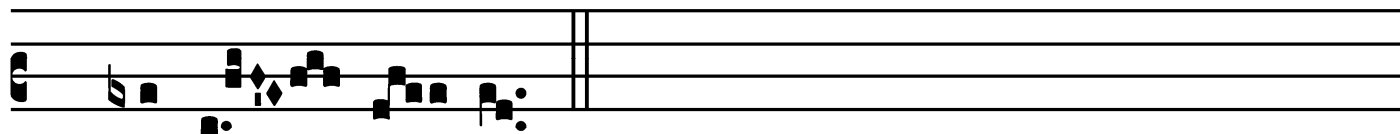
E- á-tus sér- vus, * quem, cum vé- ne-rit Dómi-



nus, invéne- rit vi-gi- lán-tem : amen dí-co vó- bis, super



ómni- a bóna sú- a constí- tu- et é- um.



T. P. Alle- lú- ia.

