

Common of a Confessor Bishop: Mass I

Introit

Intr.

1.

S

Tá-tu-it * é-i Dó-mi-nus te-staméntum

pá-cis, et príncipem fé-cit é-um : ut sit íl-li sa-

cerdó-ti-i dígni-tas in æ-tér-num. *T.P.* Alle-

lú-ia, alle- lú-ia. *Ps.* Meménto Dómine Dá-vid : *

et ómnis mansu-e-tú-dinis é-jus. Gló-ri-a Pátri.

E u o u a e.

Common of a Confessor Bishop: Mass I

Gradual

Grad.

5.

G

C-ce * sacérdos má- gnus, qui in di-é-

bus sú- is plá- cu- it Dé- o.

∇. Non est invéntus sími- lis íl-li,

qui conservá-

ret * légem Excél- si.

Common of a Confessor Bishop: Mass I

Alleluia

8.
A

Lle- lú-ia. * *ij.*

V. Tu es sacér- dos in æ- tér- num,

se- cúndum ór- di- nem * Melchí- sede- ch.

Common of a Confessor Bishop: Mass I

Second Alleluia

(In Paschal Time)

2.
A 
Lle-lú-ia. *  Ψ . Hic

est sacér-  dos, quem co-roná-vit


* Dó- minus.

Common of a Confessor Bishop: Mass I

Tract

Tract.

8.

B

E-á- tus vir, * qui tímet Dó- mi-

num : in man-dá- tis é- jus

cú- pit ni- mis. ∇ . Pót- ens in térra

é-rit sémen é- jus : ge-ne- rá- ti-o re- ctó-

rum be- ne- di-cé-tur.

∇ . Gló- ri- a et di-ví-ti-æ in dómo é- jus : et

ju- stí- ti- a é- jus má- net * in sá- cu- lum

sá- cu- li.

Common of a Confessor Bishop: Mass I

Offertory

Offert.
8.

I

Nvé-ni * Dá-vid sérvum mé- um, ó- le- o sán-

cto únxi é- um : má-nus e- nim mé- a

auxi-li- á- bi-tur é- i, et bráchi- um mé- um

confortá- bit é- um. *T. P.* Alle-lú- ia.

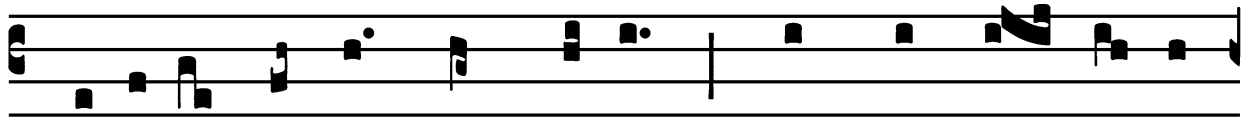
Common of a Confessor Bishop: Mass I

Communion

Comm.

7.

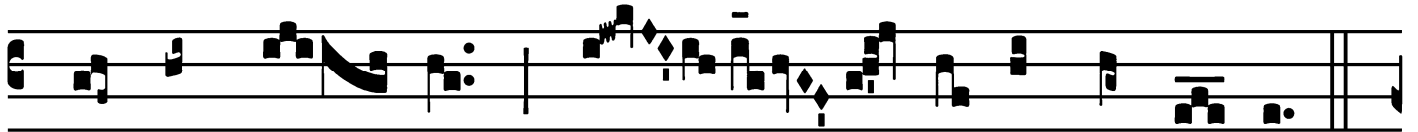
F



Idé-lis sérvus * et prúdens, quem constí- tu- it



Dómi-nus super famí-li- am sú- am : ut det íl- lis



in témpo- re trí- ti- ci mensú- ram.



T. P. Alle- lú- ia.

