

Votive Mass of the Sacred Heart of Jesus

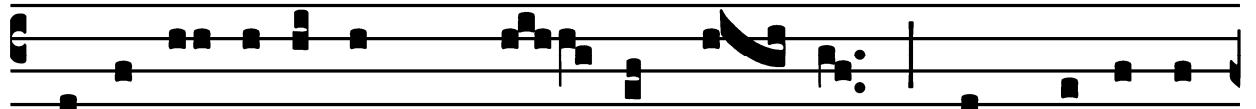
Introit

(In Paschal Time)

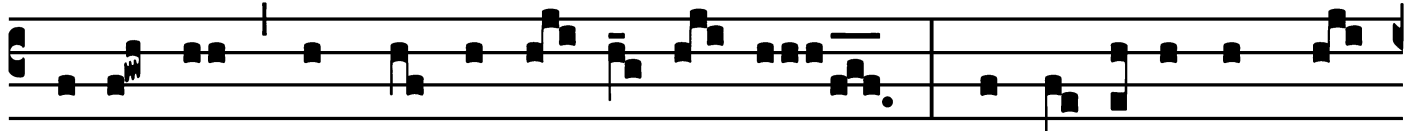
Intr.

5.

C



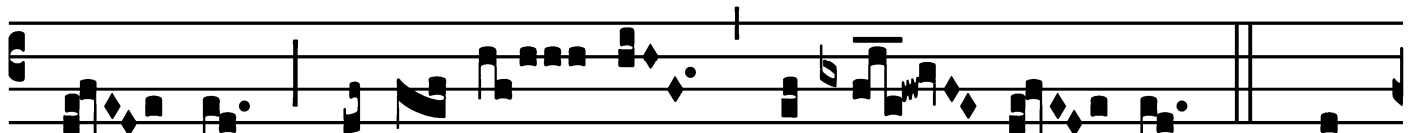
Ogi-ta- ti- ónes * Cór- dis é- jus in gene-ra-



ti- ó-ne et ge-ne-ra- ti- ó-nem : ut é-ru-at a mór-



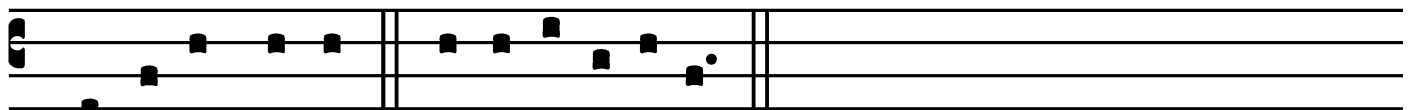
te á- nimas e- ó- rum et á-lat é-os in



fá- me, alle- lú- ia, al-le- lú- ia. *Ps.* Ex-



sultá-te jústi in Dómino, * réctos decet collaudá-ti- o.



Gló-ri- a Pátri. E u o u a e.

Votive Mass of the Sacred Heart of Jesus

Alleluia
(In Paschal Time)

3.
A Lle- lú-ia. * *ij.*

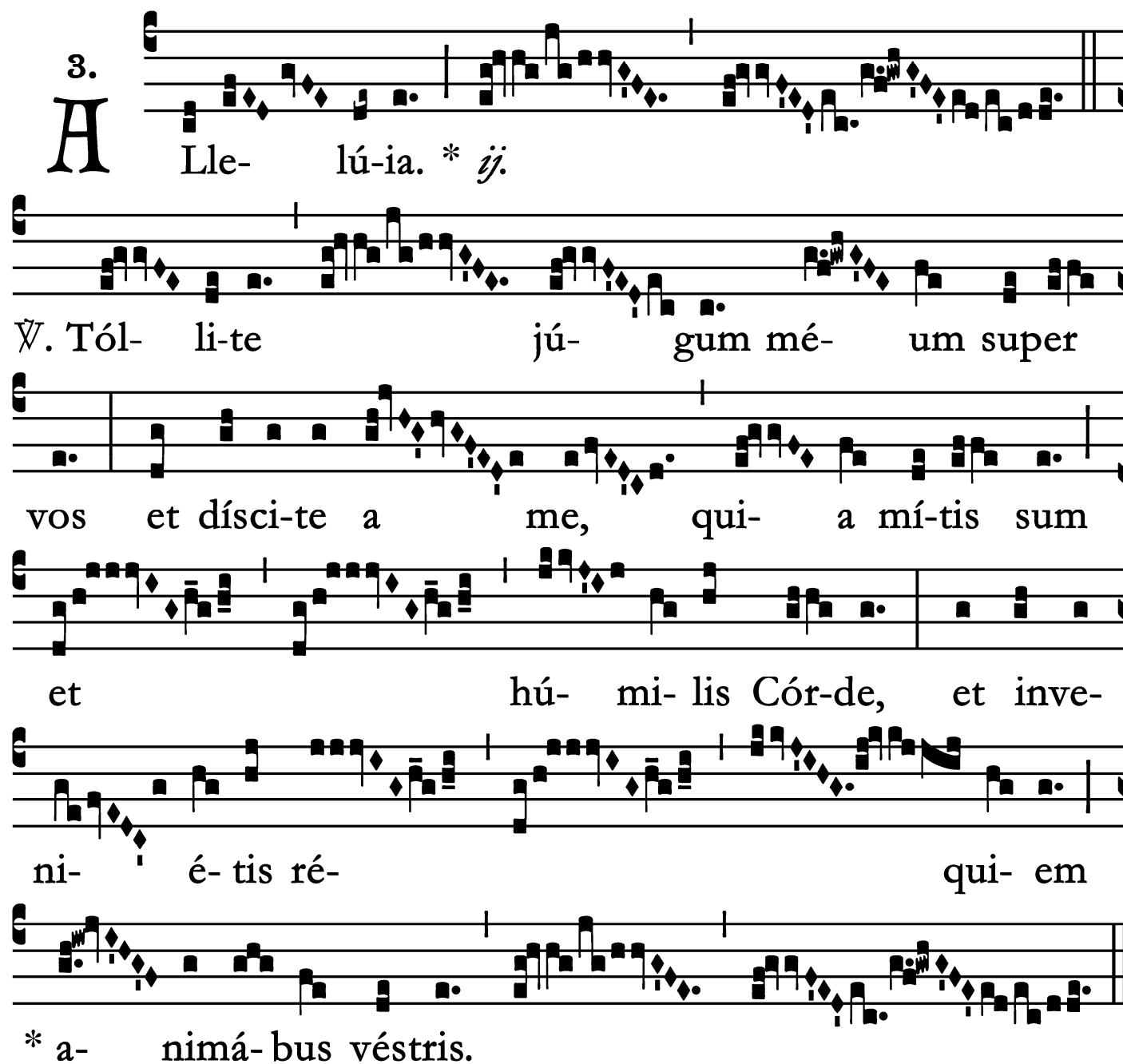
∞. Tól- li-te jú- gum mé- um super

vos et dísci-te a me, qui- a mí-tis sum

et hú- mi- lis Cór-de, et inve-

ni- é- tis ré- qui- em

* a- nimá-bus véstris.

The image shows a musical score for the Alleluia. It consists of seven staves of music. The first staff begins with a large, bold initial 'A' and the number '3.' above it. The lyrics are written below the staves. The music is in a simple, rhythmic style with a treble clef and a common time signature. The lyrics are: 'Lle- lú-ia. * ij.' followed by '∞. Tól- li-te jú- gum mé- um super', 'vos et dísci-te a me, qui- a mí-tis sum', 'et hú- mi- lis Cór-de, et inve-', 'ni- é- tis ré- qui- em', and '* a- nimá-bus véstris.'

Votive Mass of the Sacred Heart of Jesus

Second Alleluia

(In Paschal Time)

8.
A L- le- lú- ia. *

Ÿ. Vení- te ad me,

ó- mnes qui laborá-

tis, et one-rá-ti é- stis : et égo

* re-fí-ci- am vos.

Votive Mass of the Sacred Heart of Jesus

Offertory

(In Paschal Time)

Offert.

6.

h

Olocáu- stum * et pro peccá- to non postu-

lá- sti; tunc dí- xi : Ecce véni- o. In cá-

pi-te lí- bri scríptum est de me ut fáce-rem vo-lun-

tá- tem tú- am : Dé- us mé- us, vó- lu- i et lé-

gem tú- am in mé- di- o Córdis mé-


i. Alle- lú- ia.

Votive Mass of the Sacred Heart of Jesus

Communion

(In Paschal Time)

Comm. 6.



S I quis sí-tit * véni- at ad me et bí- bat, alle-
lú-ia, alle- lú- ia.

