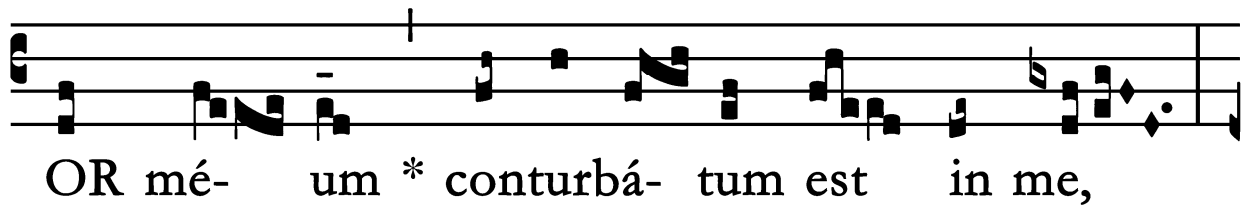


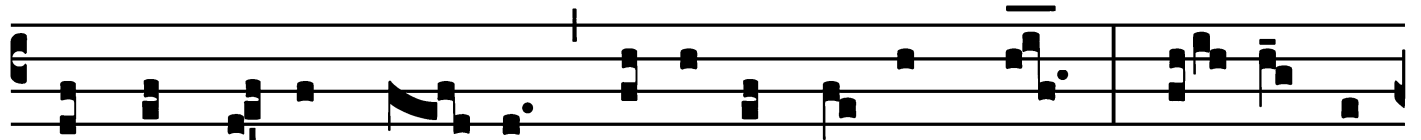
Introit

Intr.
5.

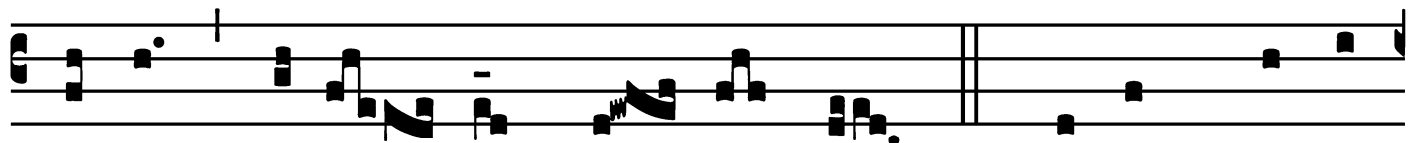
C



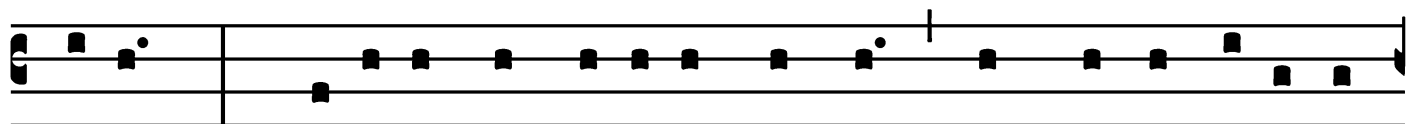
OR mé- um * conturbá- tum est in me,



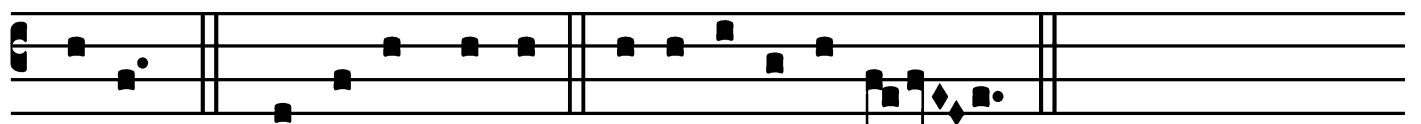
et formí-do mór- tis cé-ci-dit su-per me. Tí-mor et



trémor vené- runt su- per me. *Ps.* Sálvum me fac



Dé-us : * quóni- am intravérunt áquæ usque ad ánimam



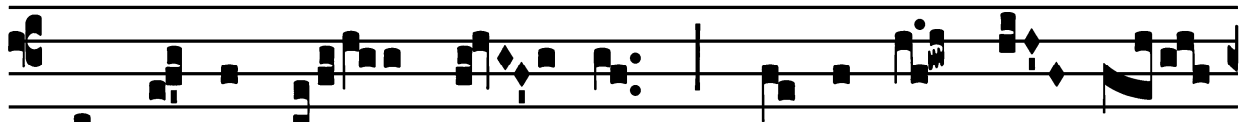
mé-am. Gló-ri- a Pátri. E u o u a e.

Gradual

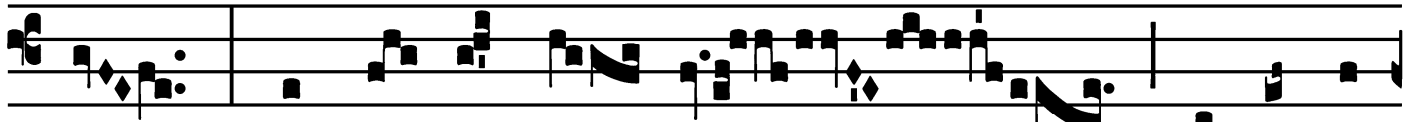
Grad.

2.

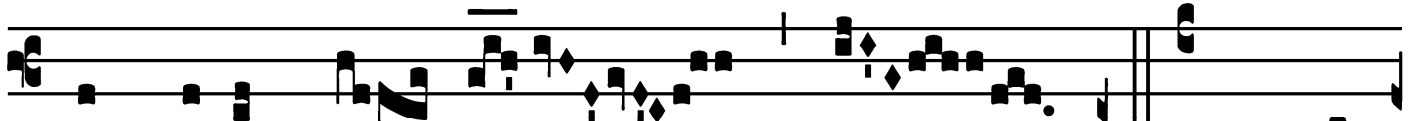
R



Eplé- ta est má- lis * á-nima mé- a,



et ví- ta mé- a inférno



appropinquá- vit.

∩. Æsti-



má- tus sum cum descendéntibus in lá-

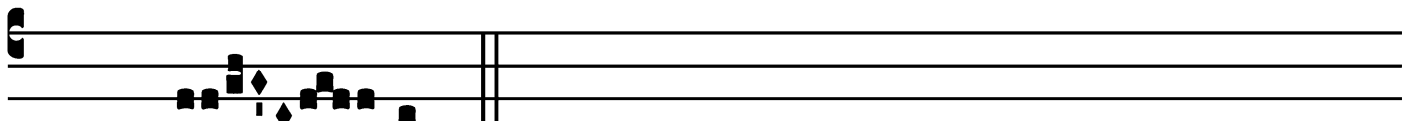


cum, fáctus sum si-cut hó-



mo

* si- ne adju- tó-



ri- o.

Tract

Tract.

2.

✠

Xáudi me,

* Dó- mi- ne,

quó- ni- am bení- gna est mi- se- ri- córdi- a

tú- a. *∇*. Et ne avér-

tas fá- ci- em

tú- am a pú- e- ro tú- o :

quóni- am trí-

bu- lor, ve- ló- ci- ter exáu- di me.

∇. Ne discés- se- ris a me :

quó-

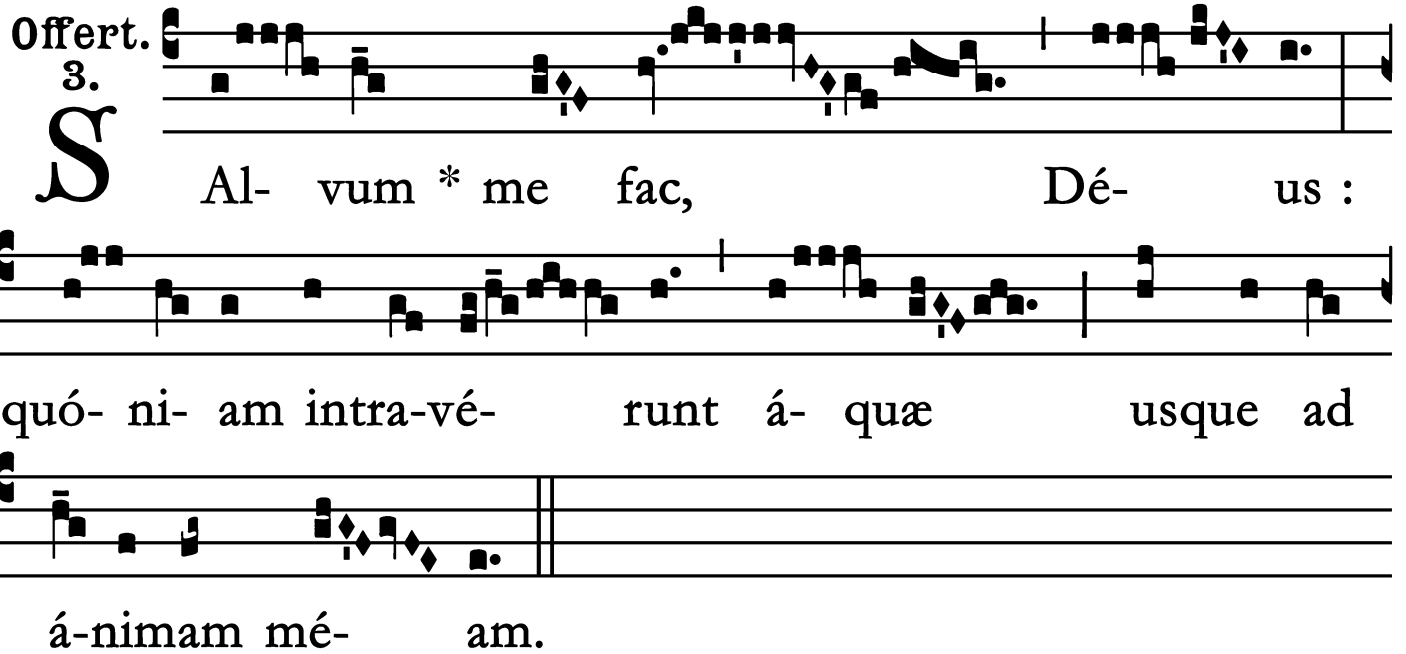
ni- am tribu- lá- ti- o pró- xima est :

quóni- am non

est * qui ád- juvet.

Offertory

Offert.
3.



S Al- vum * me fac, Dé- us :

quó- ni- am intra-vé- runt á- quæ usque ad

á-nimam mé- am.

Communion

Comm.
3.

V I-gi-lá- te, * et o- rá- te, ut non intré- tis
in tenta- ti- ó- nem : spí-ri-tus quídem prómptus est,
cá- ro autem infír-ma.

