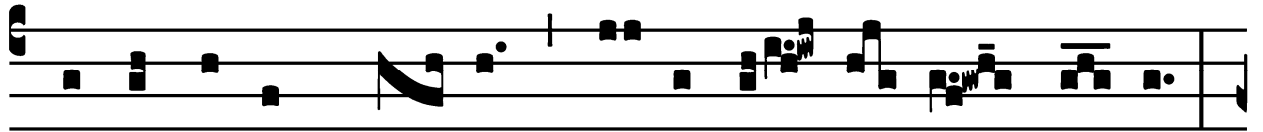


Inventionis Pueri Jesu in medio Doctorum - Die 28 Februarii
In pluribus Diœcesibus

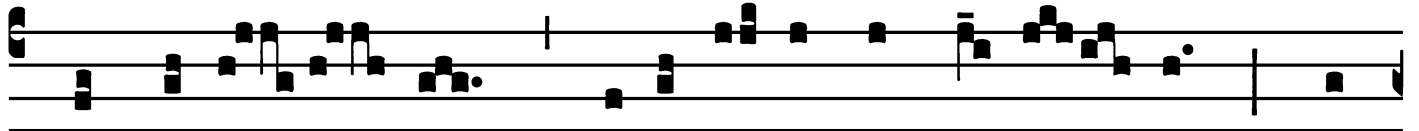
Introit

Intr.
8.

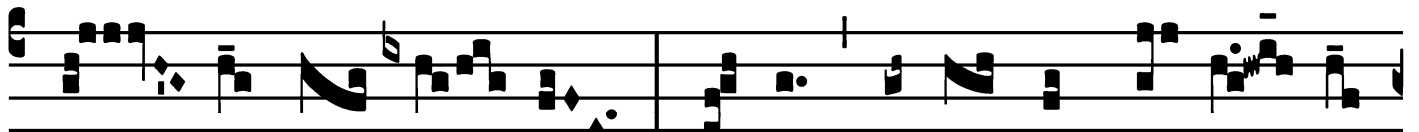


I

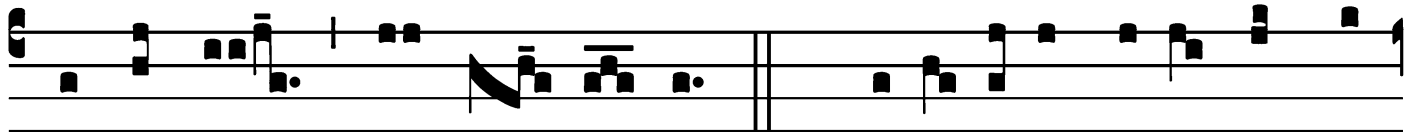
N excélsa thró- no * ví- di se- dé- re ví- rum,



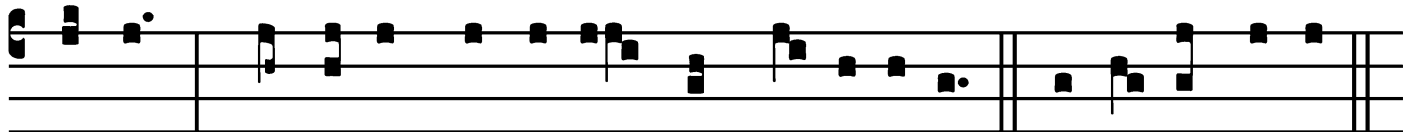
quem adó- rat multi- tú- do Ange- ló- rum, psal-



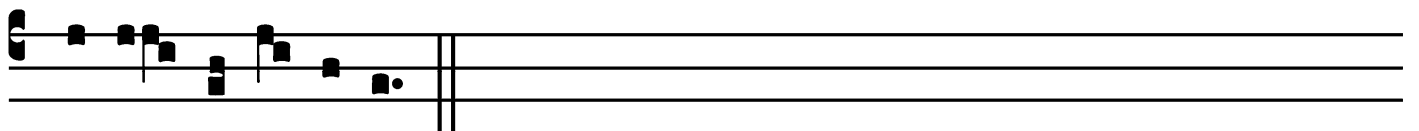
lén- tes in ú- num : ecce cú- jus impé- ri- i



nómen est in æ- tér- num. *Ps.* Jubi- láte Dé- o ómnis



tér- ra : * serví- te Dómino in læ- tí- ti- a. Gló- ri- a Pátri.



E u o u a e.

Inventionis Pueri Jesu in medio Doctorum - Die 28 Februarii

Gradual

Grad. 1.

h A- bé- bo * pró- pter sa- pi- én-
ti- am cla-ri-tá- tem ad túr- bas,
et honó- rem ápu- d se- ni- ó- res jú- ve-
nis, et in conspé- ctu potén- ti- um ad-
mi- rá- bi- lis é- ro. *V.* In Chrí- sto sunt ó-
mnes the- sáu- ri sapi- én- ti- æ et sci-
én- ti- æ * abscón- di- ti.

Tract
(Page 1 of 2)

Tract.

8.

D

Omne

* Dé-us vir-tú- tum, con-

vér- te nos :

et osténde fá- ci- em

tú- am, et sálvi é- ri- mus :

só- net vox tú-

a in áu-ribus mé-

is. \checkmark . Vox e-nim tú-a dúl-

cis, et fá-ci- es tú-

a decó-ra ni- mis.

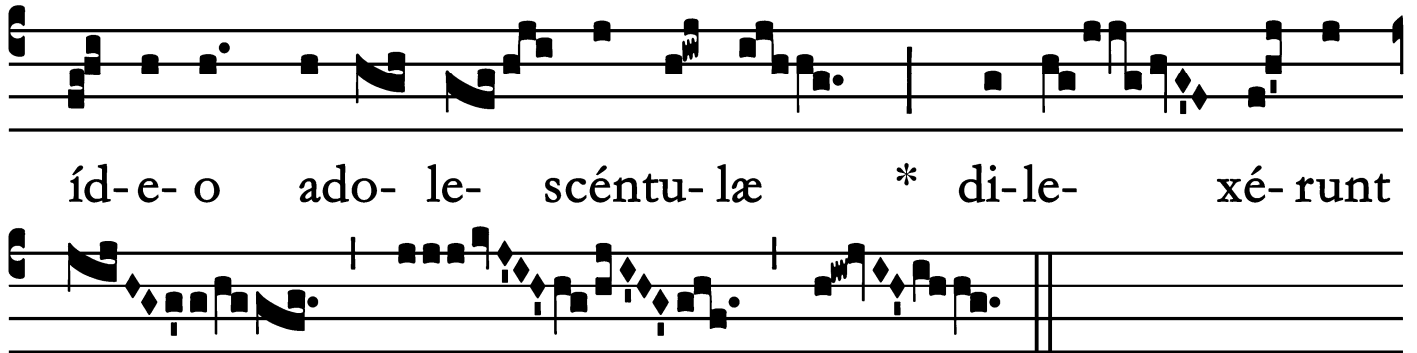
\checkmark . O- le- um ef-

fú-

sum nómen tú-um, Jé- su :

Inventionis Pueri Jesu in medio Doctorum - Die 28 Februarii

Tract
(Page 2 of 2)

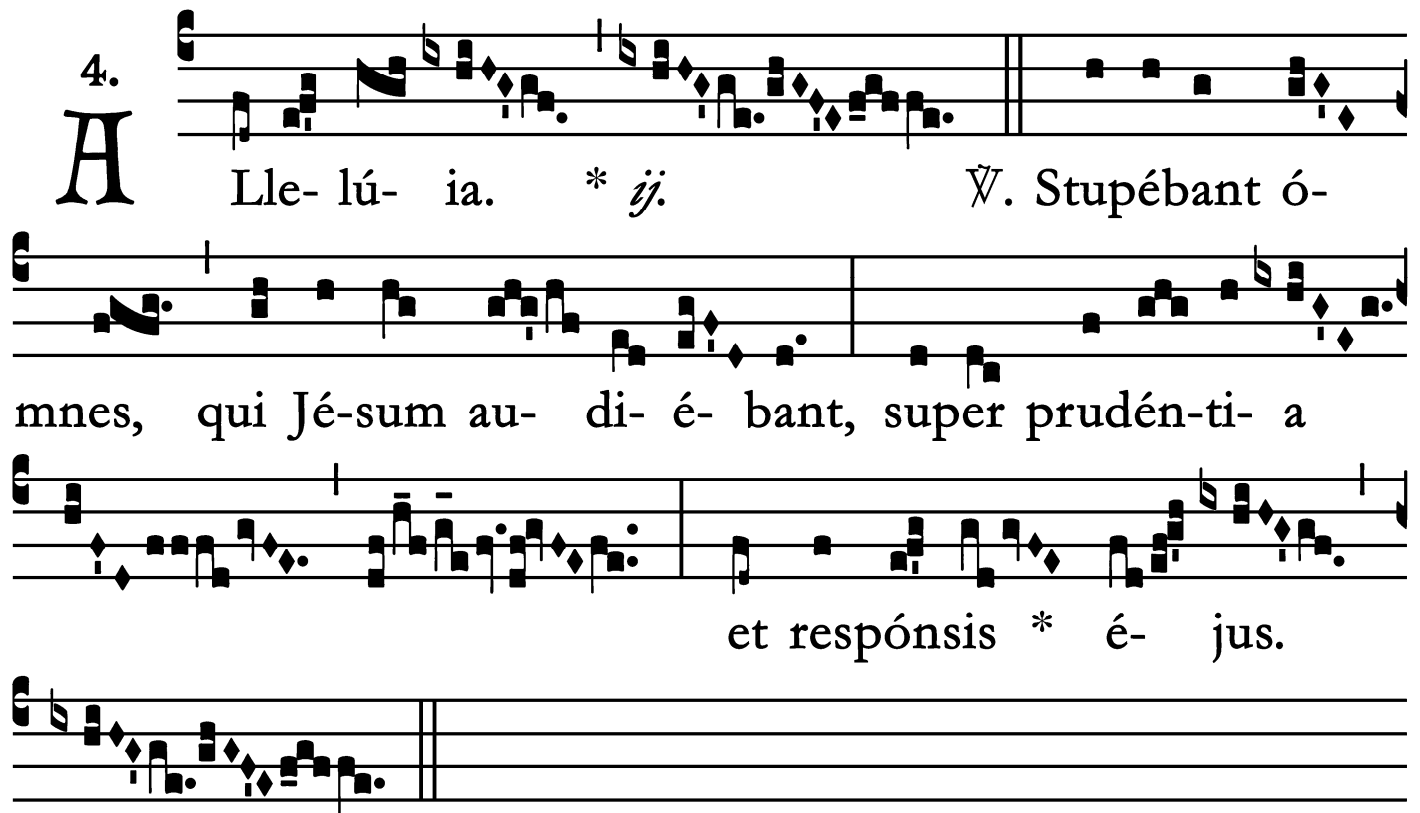


íd-e- o ado- le- scéntu-læ * di-le- xé- runt

te.

Alleluia

4.
A Lle- lú- ia. * *ij.* *Ÿ.* Stupébant ó-
mnes, qui Jé-sum au- di- é- bant, super prudén-ti- a
et respónsis * é- jus.



Inventionis Pueri Jesu in medio Doctorum - Die 28 Februarii

Offertory

Offert.
3.

F

I- li- i Sí- on, * exsultá- te,

et lætámi- ni in Dó- mi- no Dé- o vé-

stro, qui- a dé- dit vó- bis doctó- rem ju-

stí- ti- æ.

Communion

Comm.

5.

V

Erba * ví-tæ ætérnæ há-bes, et nos credí-di-

mus, et cognóvimus, qui- a tu es Chrí- stus Fí-

li- us Dé- i.

Missæ Propriæ Dioecesium Angliæ,
Desclée et Socii, 1909.
Supplement to Graduale Romanum No. 696 (1908).
Cf. Officia Propria S. Ordinis Servorum B.M.V. (1949).

