

Introit

Intr. 3.
h Umi- li- á- vit * semet-ípsum Dóminus Jé- sus

Chrí- stus usque ad mórtem, mórtem autem crú-
cis : propter quod et Dé- us exaltá- vit íl- lum, et doná-
vit íl- li nómen, quod est super ó- mne
nó- men. *Ps.* Mi- se- ri- córdi- as Dómi- ni in ætérnum can-
tá- bo : * in gene- ra- ti- ónem et gene- ra- ti- ónem.

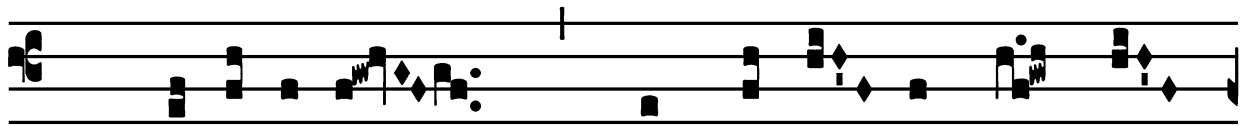
Gló- ri- a Pátri. E u o u a e.

Gradual

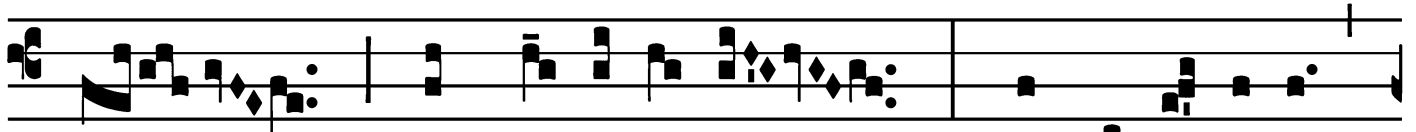
Grad.

2.

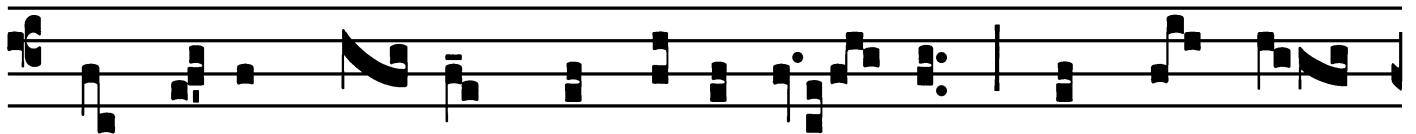
I



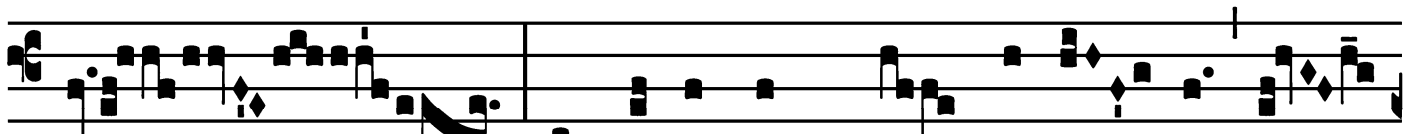
Mpropé-ri- um * expectá- vit cor mé-



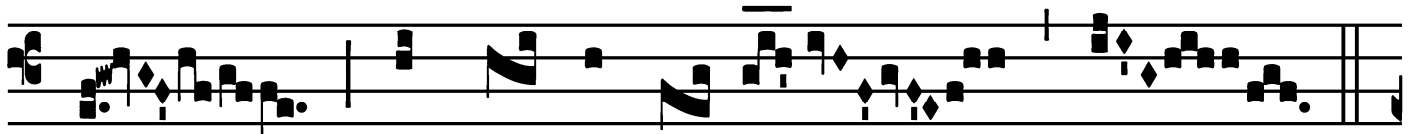
um, et mi-sé-ri- am : et sustí-nu- i,



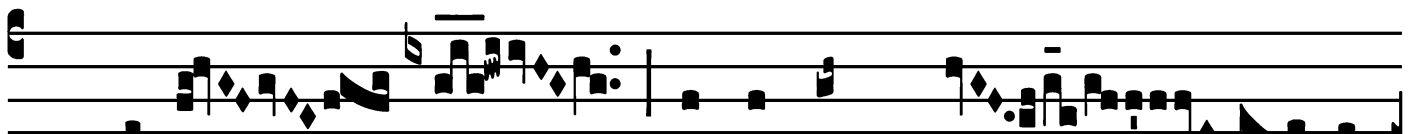
qui simul mé- cum contrista-ré- tur, et non fú-



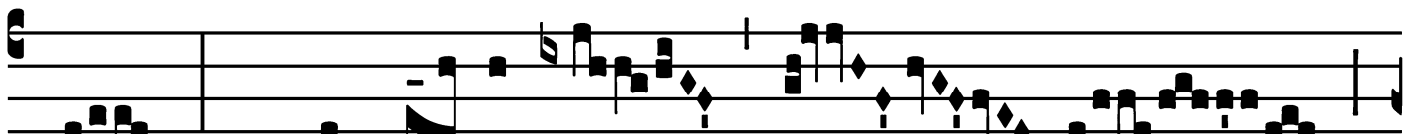
it : conso-lántem me quæ-sí- vi,



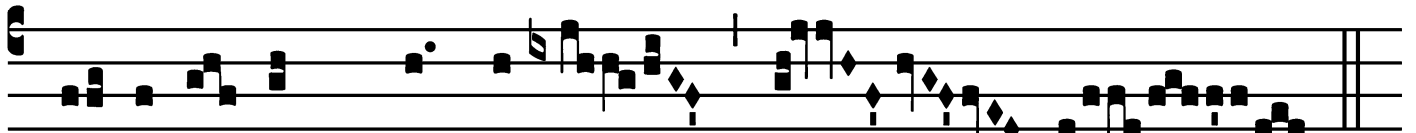
et non invé- ni.



Ÿ. Dedé- runt in éscam mé- am



fel, et in sí- ti mé- a



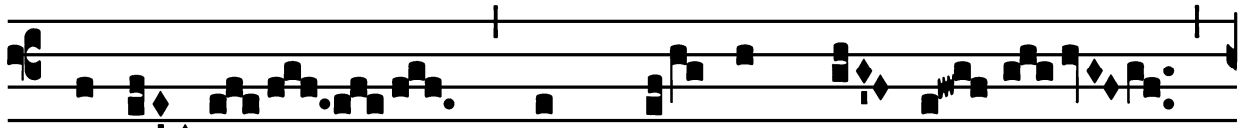
po- tavé- runt me * a-cé- to.

Tract
(Page 1 of 2)

Tract.

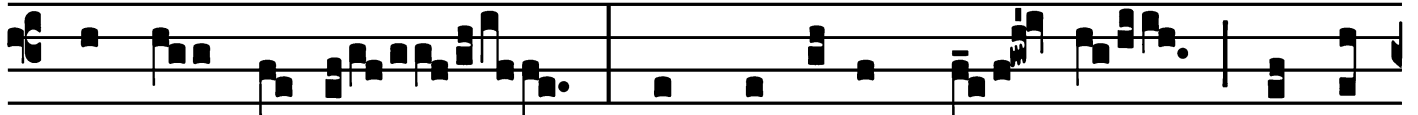
2.

V



Ere

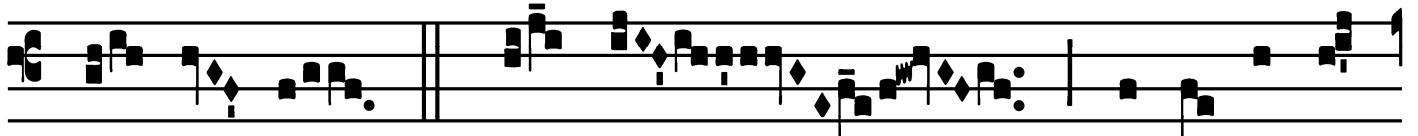
* languó- res nóstros



ipse tú- lit,

et do-lóres nó- stros

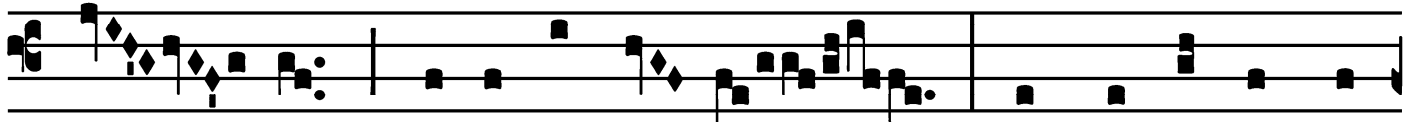
ipse



por- tá- vit.

∩. Et nos

pu- tá- vimus



é- um qua-si lepró- sum

et percússum a



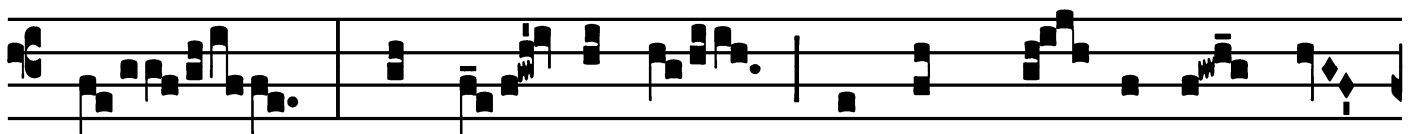
Dé- o, et humi-li- á- tum.

∩. Ipse autem



vulne- rá- tus est

propter in-iqui- tá-tes nó-

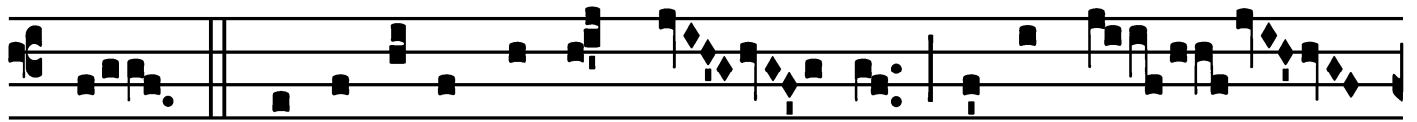


stras,

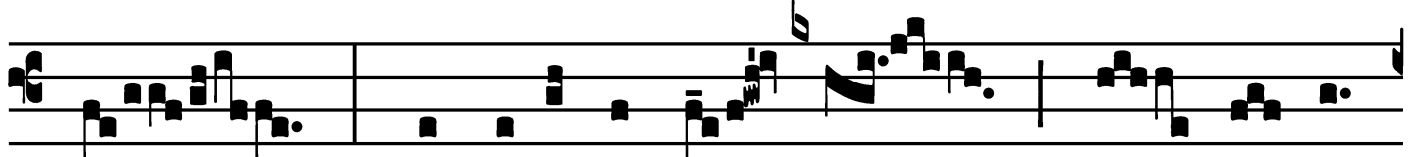
attrí- tus est

propter scé- le-ra nó-

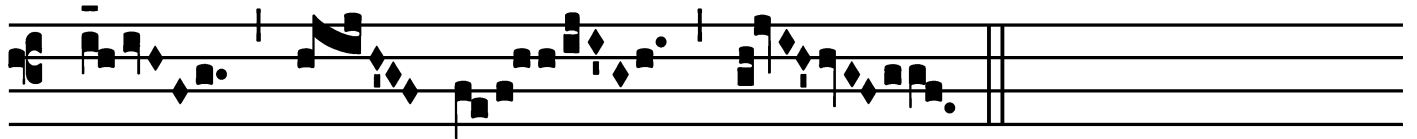
Tract
(Page 2 of 2)



stra. V̇. Disciplína pá-cis nó- stræ super é-



um : et livó-re é- jus sa- ná- ti *



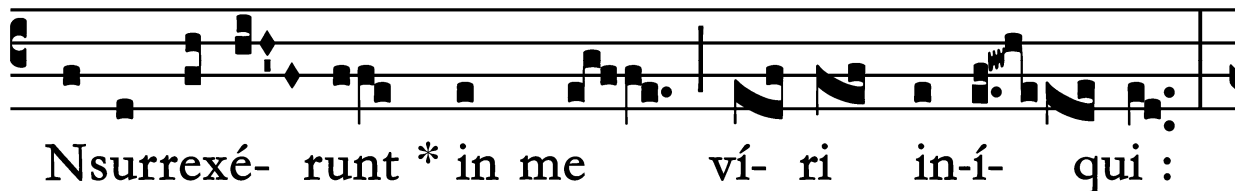
sú- mus.

Offertory

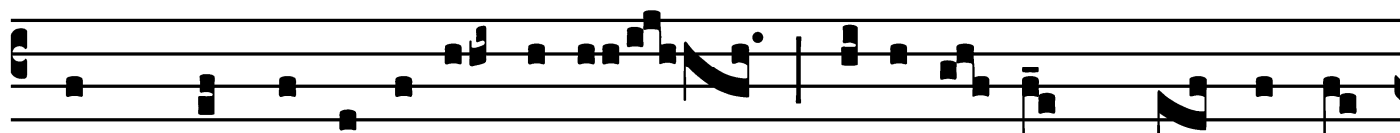
Offert.

5.

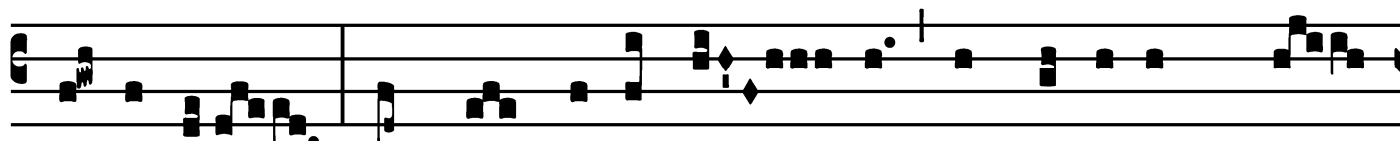
I



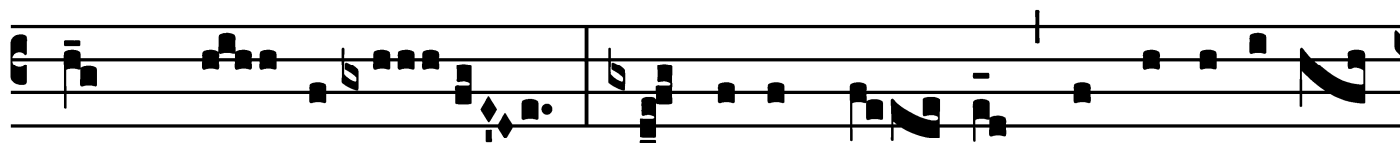
Nsurrexé- runt * in me ví- ri in-í- qui :



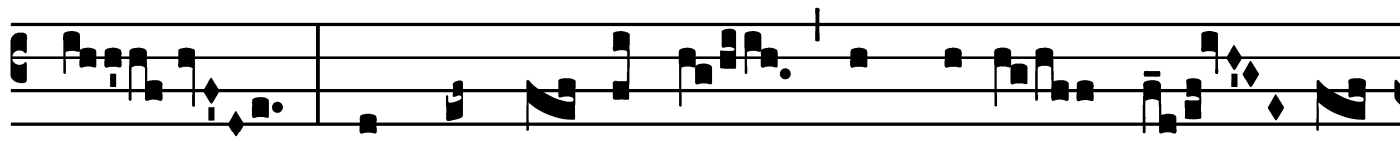
absque mi-se-ricór-di- a quæsi- é- runt me inter-



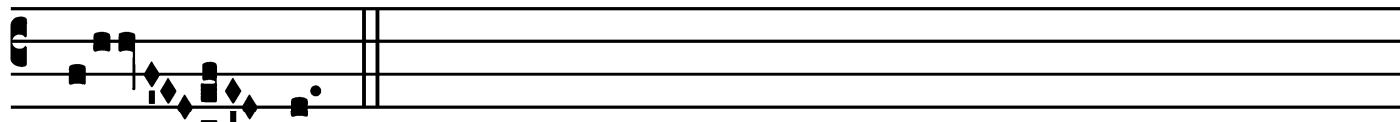
fí-ce-re : et non pepercé- runt in fá-ci-em mé-



am spú- e-re : lánce- is sú- is vulne-ravérunt



me, et concús-sa sunt ómni- a ós- sa



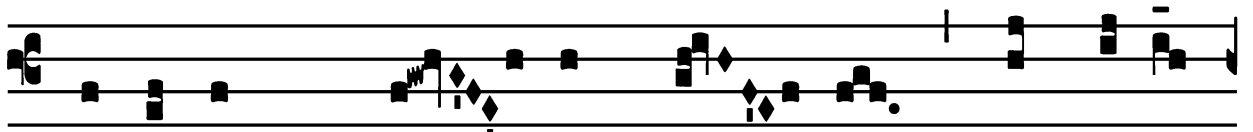
mé- a.

Communion

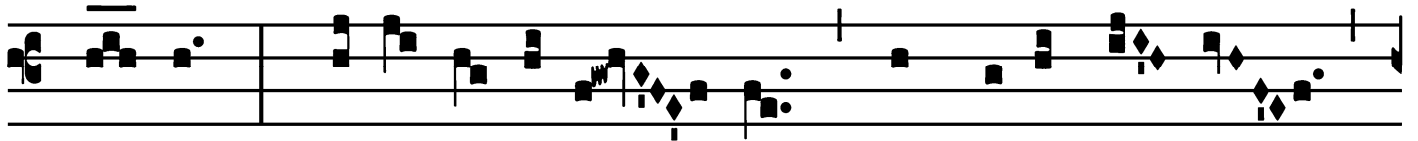
Comm.

2.

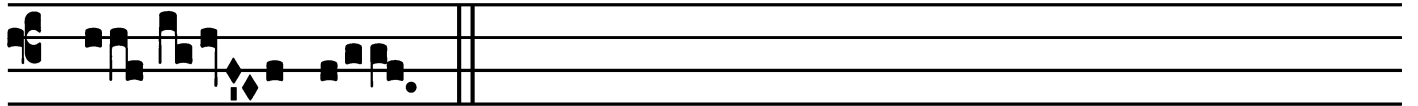
F



Odé-runt * má- nus mé- as et pédes



mé- os : di-nume-ravé- runt ómni- a ós- sa



mé- a.

