

S. Petri Claver, Confessoris - Die 9 Septembris  
Proprium Sanctorum pro aliquibus locis

*Introit*

Intr.

8.

**S**

A-ti-á- vit \* Dó-minus á-nimam in- á-nem :

sedén-tes in ténebris et úmbra mór-tis, vínc-tos in

men-di-ci-tá-te et fér-ro. *Ps.* Confi-te-ántur Dó-

mino mi-se-ricórdi-æ é-jus : \* et mi-rabí-li-a é-jus fí-li-

is hó-minum. Gló-ri-a Pá-tri. E u o u a e.

# Gradual

(Page 1 of 2)

Grad.

2.

**L**

Ibe-rá- bit \* páu- pe-rem a pot- én-

te, et páupe-rem cú- i non é- rat adjú- tor :

pár- cet páu- pe-ri et ín- o- pi,

et á- nimas páu- perum

sál- vas fá- ci- et.

Ÿ. Ex

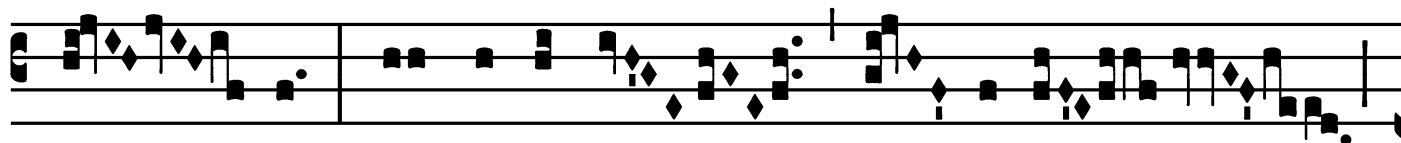
usú- ris et in- iqui- tá-

te ré- d- imet á- nimas e- ó-

S. Petri Claver, Confessoris - Die 9 Septembris

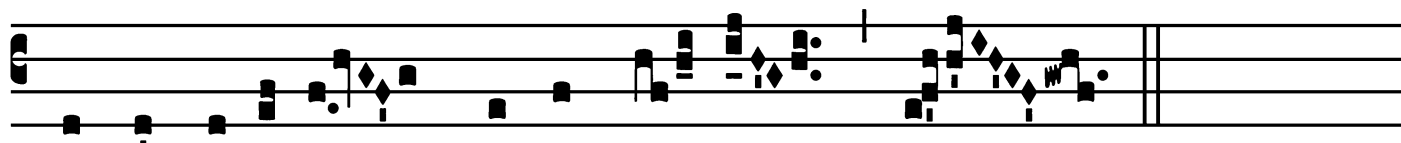
*Gradual*

(Page 2 of 2)



rum, et hono-rá-

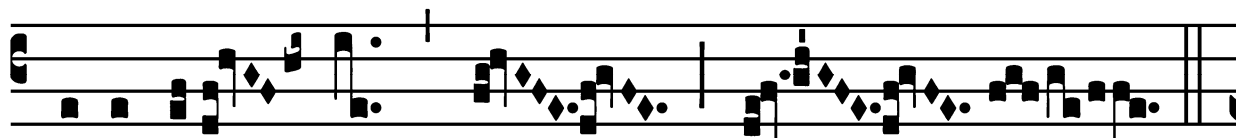
bi-le



nómen e-órum \* co-ram íl- lo.

# Alleluia

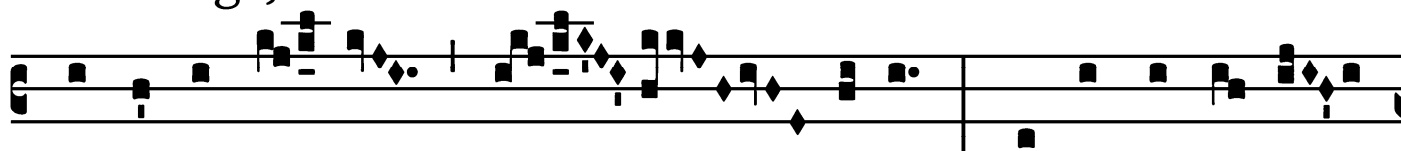
7.  
**A**



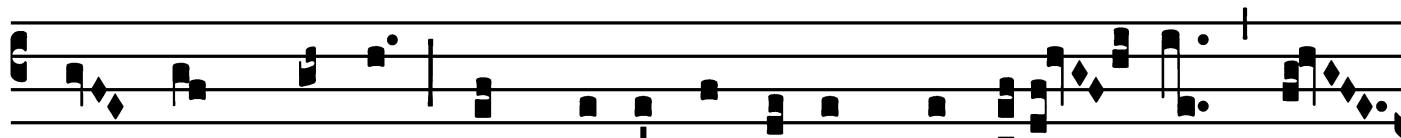
Lle-lú- ia. \* *ij.*



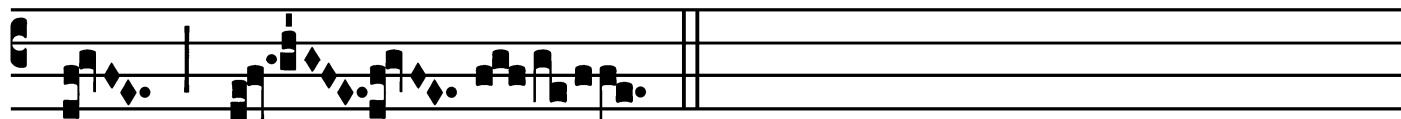
Ÿ. Exsúrge, Dómine Dé- us : exal-té-tur mánus tú- a : ne



obli-viscá- ris páu- perum : tí-bi de-re- lí-



ctus est páuper : órphano tu é-ris \* adjú- tor.



# Offertory

Offert. 4.

- o quod li- be-rás- sem \* páu- pe-rem vo-ci-fe-  
rántem, et pupíl- lum, cú- i non és-set adjú- tor,  
bene-dí- cti- o per- i-tú-ri super me ve-ni-é- bat,  
et cor vídu- æ conso-lá-tus sum. O- cu-lus  
fú- i cá- co, et pes cláu- do : pá- ter é-  
ram páu- pe-rum.

## Communion

Comm. 1.



**E**-go pá-scám \* óves mé-as, et é-go é-as ac-  
cubá-re fá-ci-am, dí-cit Dóminus Dé-us. Quod per-  
í-e-rat, requí-ram : et quod abjéctum é-rat, redú-cam ;  
et quod confráctum fú-e-rat, alli-gá-bo : et quod in-  
fírmum fú-e-rat, con-so-lidá-bo.

