

Introit

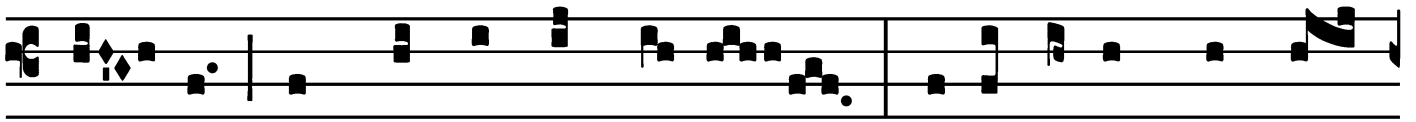
Intr.

2.

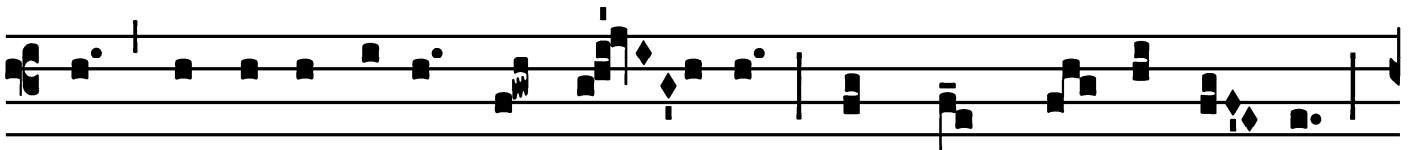
R



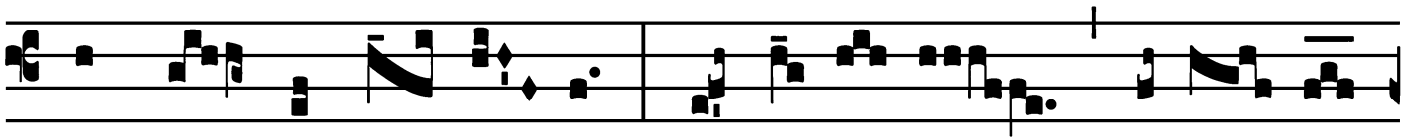
Arravé- runt * mí- hi in-í- qui fabu- la- ti-



ó- nes, sed non ut lex tú- a : égo autem loqué-



bar de testimóni- is tú- is in conspé-ctu ré- gum,



et non confun-dé- bar. Al-le-lú- ia, alle- lú-



ia. *Ps.* Be-á- ti immacu-lá- ti in ví- a : * qui ámbu- lant



in lége Dómi- ni. Gló- ri- a Pátri. E u o u a e.

Alleluia

1.
A Lle- lú- ia. * *ij.*

∇. Sapi- énti- a hú- jus mún- di stultí-
ti- a est a-pud Dé- um, scríptum est e-nim : Dó-
minus nó- vit cogi- ta-ti- ó- nes sapi- énti- um, * quó-
ni- am vá- næ sunt.

The image shows a musical score for an Alleluia. It consists of six staves of music. The first staff begins with a large, ornate initial 'A' and the number '1.' above it. The lyrics are written below the staves. The music is in a simple, rhythmic style with square notes and stems. The lyrics are in Latin and include a large initial 'A' and a large initial '∇'. The text is: '1. A Lle- lú- ia. * ij. ∇. Sapi- énti- a hú- jus mún- di stultí- ti- a est a-pud Dé- um, scríptum est e-nim : Dó- minus nó- vit cogi- ta-ti- ó- nes sapi- énti- um, * quó- ni- am vá- næ sunt.'

Feast of St. Justin, Martyr - April 14

Second Alleluia

1.
A Lle- lú-ia. *

∩. Ve-rúm- tamen ex-í- stimo ó- mni- a detri-
mén- tum és- se propter emi-
nén- tem sci- én- ti- am Jé- su Chrí-
sti Dó- mi-ni * mé- i.

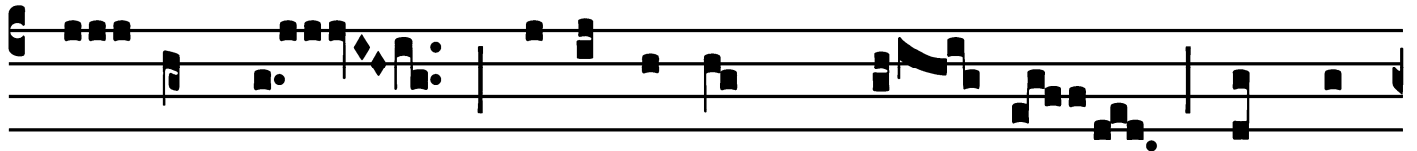
Feast of St. Justin, Martyr - April 14

Offertory

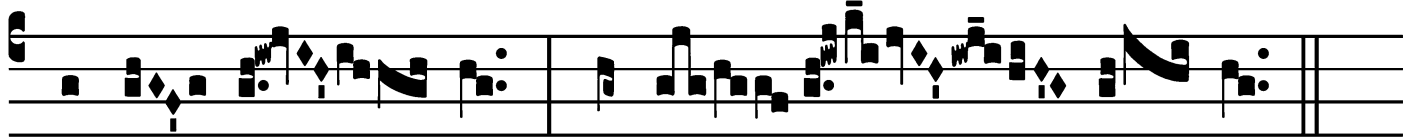
Offert.
8.



Q ON e- nim * judi- cá- vi me scí- re á-liquid



in- ter vos ni- si Jé- sum Chrí- stum, et hunc



cru- ci- fí- xum. Alle- lú- ia.

Communion

Comm. 1.
R Epó-si-ta est * mí- hi coró-na justí-
ti- æ, quam réddet mí- hi Dóminus in íl-la dí- e
jú- stus jú- dex. Alle-lú- ia.

