

Introit

Intr. 4.



I Ntret * in conspéctu tú- o, Dó- mine, gé-
mi-tus compedi- tó- rum, rédde vi- cí- nis nóstris sé- ptu-
plum in sí- nu e- ó- rum : víndi- ca sán- guinem san-
ctó- rum tu- ó- rum, qui ef- fú- sus est. *Ps.* Dé- us
venérunt géntes in hære- di- tá- tem tú- am, * pol- lu- érunt
témplum sánctum tú- um : posu- érunt Jerúsa- lem in pomó-
rum custódi- am. Gló- ri- a Pátri. E u o u a e.

Gradual

Grad.

5.

V

Indi-ca, * Dómine,

sángui-

nem sanctó- rum

tu-ó- rum, qui

effúsus est.

∩. Posu-é-

runt mortá-li- a servórum tu-órum

e-scas vo-la-tí-

libus

có- li :

cár- nes sanctó-

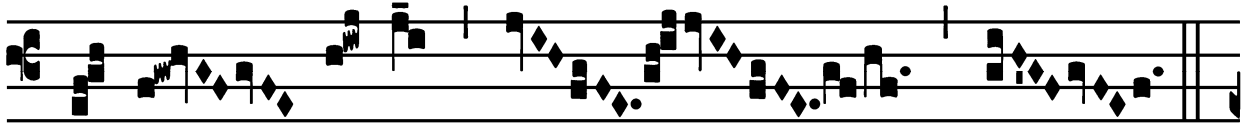
rum tu-ó-

rum

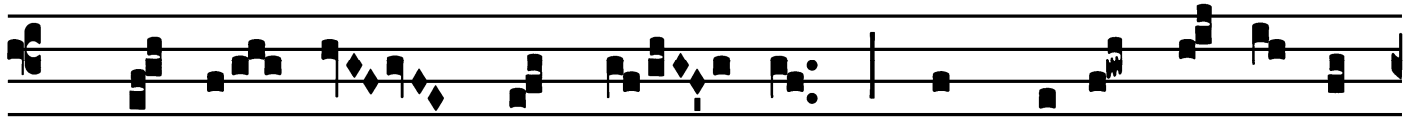
bé-sti- is * tér- ræ.

Alleluia

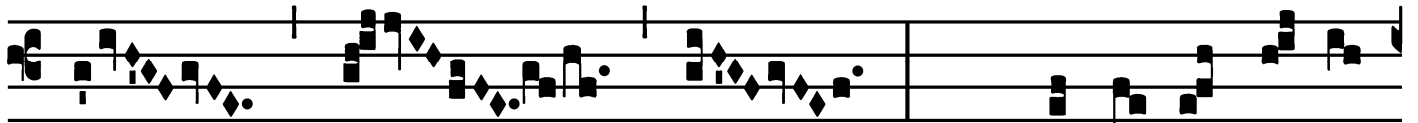
2.
A



L-le- lú- ia. * *ij.*

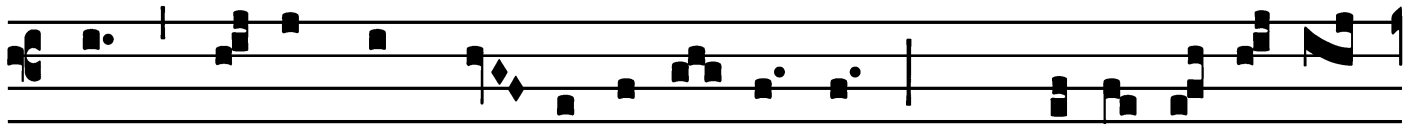


Ÿ. Córpo- ra sanctó- rum in páce se-púl-ta

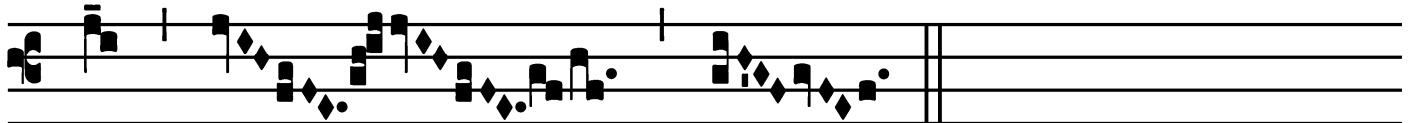


sunt,

et nómi-na e- ó-



rum ví-vent in ge- ne-ra-ti- ó-ne * et gene-ra-ti- ó-



nem.

Offertory

Offert. 4.

Xsul-tábunt * sáncti in gló- ri- a,
læ-tabún- tur in cubí- libus sú- is : exalta-
ti- ó- nes Dé- i in fáu- cibus e- ó-
rum.

Ss. Basilides, Cyrinus, Nabor and Nazarius, Martyrs - June 12

Communion

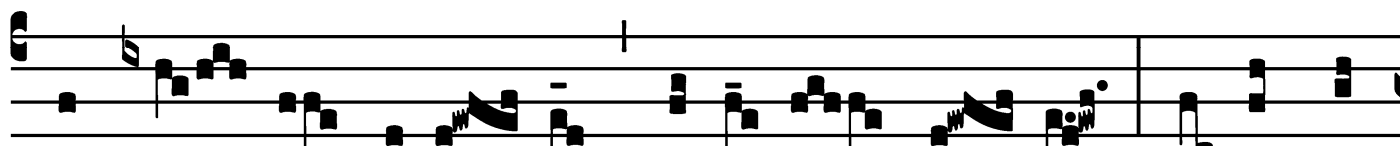
Comm. 1.

P

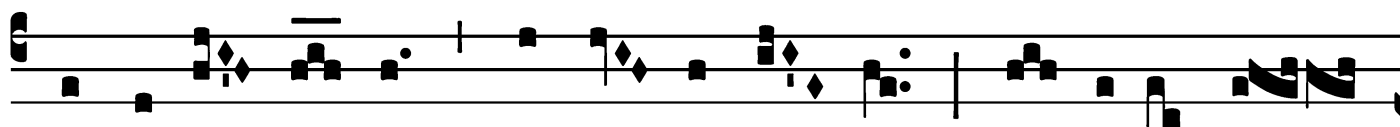
Osu-érunt * mortá-li- a servó- rum tu-ó- rum,



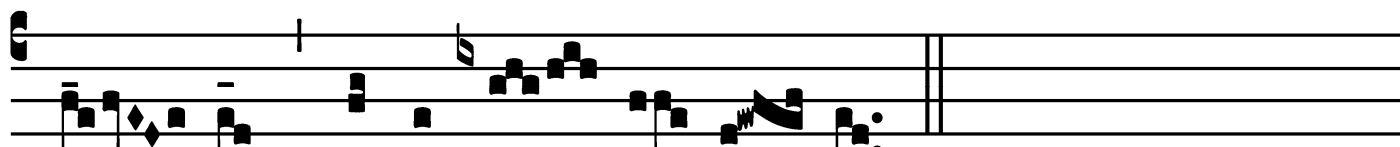
Dómi- ne, escas vo-la- tí- libus cóe- li, cárnes



sanctó- rum tu-ó- rum bésti- is tér- ræ : se-cúndum



magni-tú- di- nem bráchi- i tú- i, pós- side fí-



li- os móрте pu- ni- tó- rum.

