
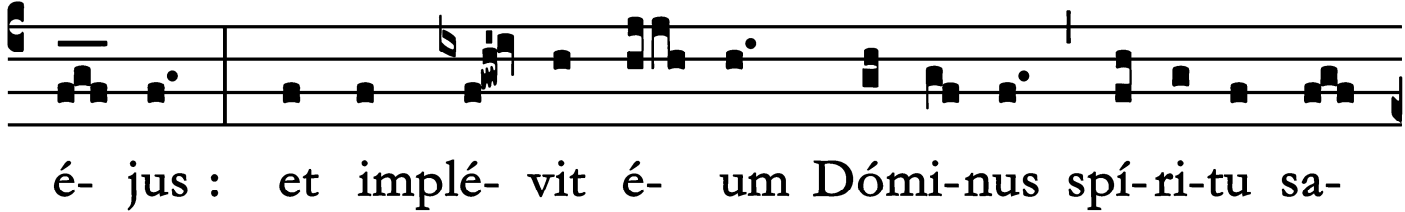


Introit

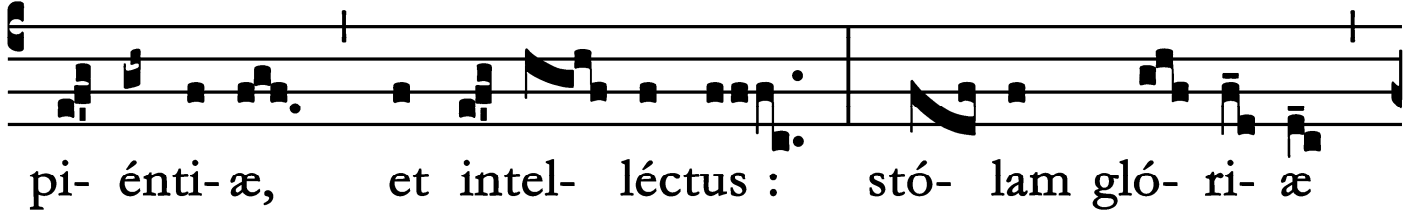
Intr. 6.




N mé- di- o * Ecclé- si- æ apé- ru- it os



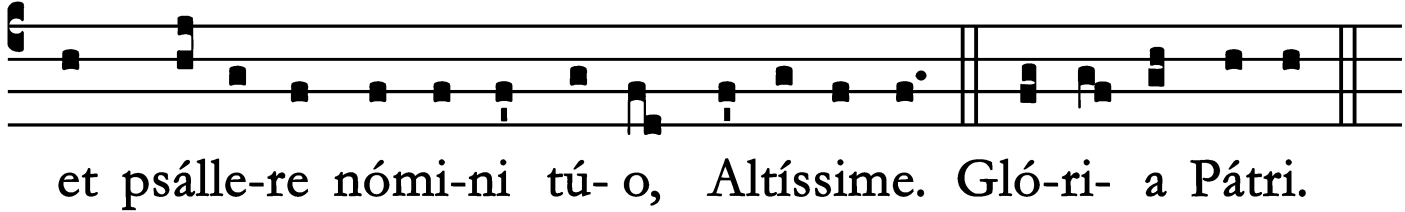
é- jus : et implé- vit é- um Dómi- nus spí- ri- tu sa-



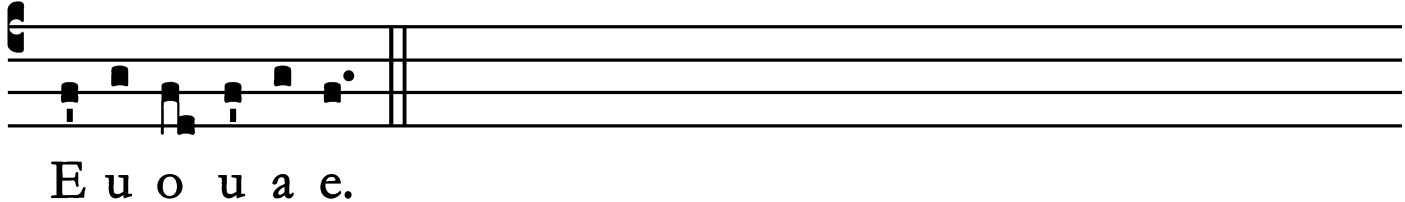
pi- énti- æ, et intel- léctus : stó- lam gló- ri- æ



índu- it é- um. *Ps.* Bónum est confi- té- ri Dómino : *



et psálle- re nómi- ni tú- o, Altíssime. Gló- ri- a Pátri.



E u o u a e.

Gradual

Grad. 1.

O S jú- sti * medi- tábi- tur sa-
pi- én- ti- am, et lín- gua é- jus
lo- qué- tur judí- ci- um. \checkmark . Lex Dé-
i é- jus in cór-
de ipsí- us : et non supplan-
tabún- tur * grés- sus é- jus.

St. Basil the Great, Bishop, Confessor and Doctor - June 14

Alleluia

2.
A

Lle-lú-ia. * *ij.* V̇. In- vé-
ni Dá- vid sér-
vum mé- um : ó- le- o sáncto mé-
o únxi * é- um.

St. Basil the Great, Bishop, Confessor and Doctor - June 14

Offertory

Offert.

2.

V

E- ri- tas mé- a * et mi-se-ri-cór- di-

a mé- a cum í- pso : et in nómi- ne mé-

o exaltábi- tur córnu é- jus.

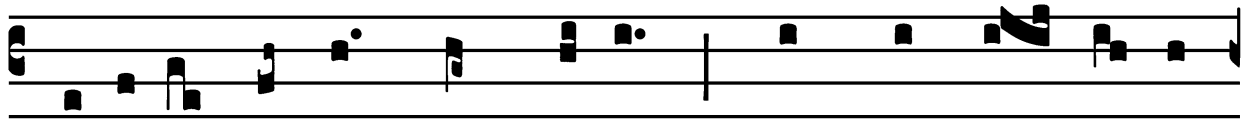
St. Basil the Great, Bishop, Confessor and Doctor - June 14

Communion

Comm.

7.

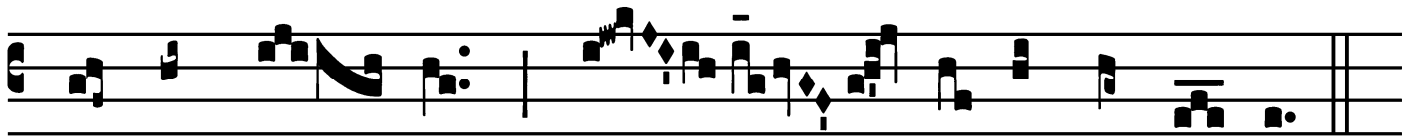
F



Idé-lis sérvus * et prúdens, quem constí- tu- it



Dóminus super famí-li- am sú- am : ut det íl- lis



in témpo- re trí- ti- ci mensú- ram.

