

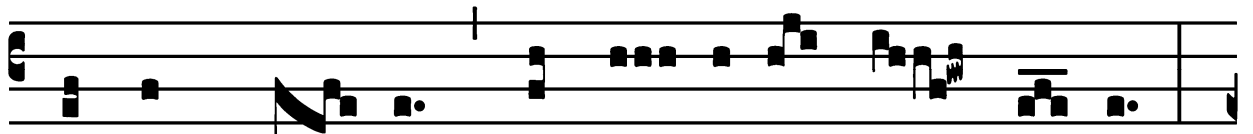
Assumption of the Blessed Virgin Mary - August 15

*Introit*

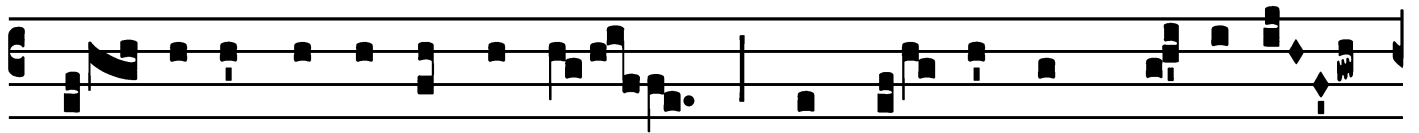
Intr.

7.

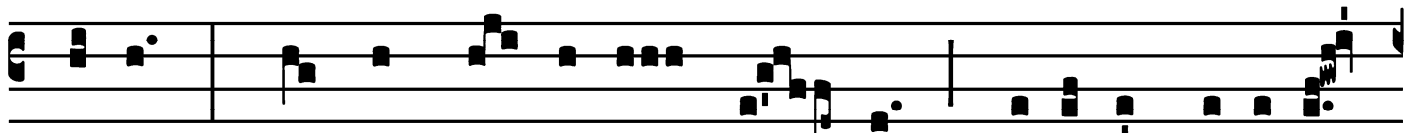
**S**



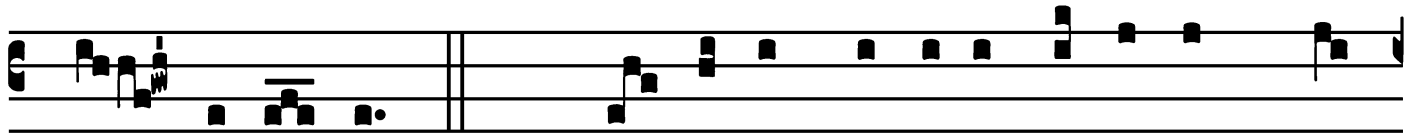
Ignum má- gnum \* appá- ru- it in cóe- lo :



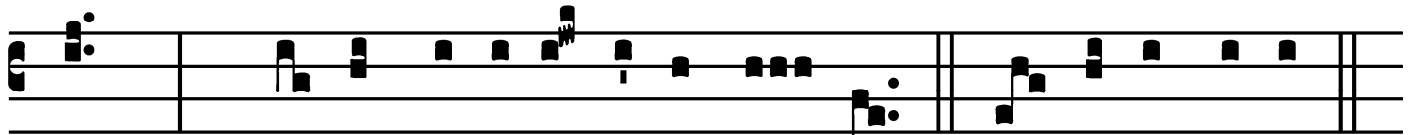
mú- li- er amícta só- le, et lú- na sub pé- dibus



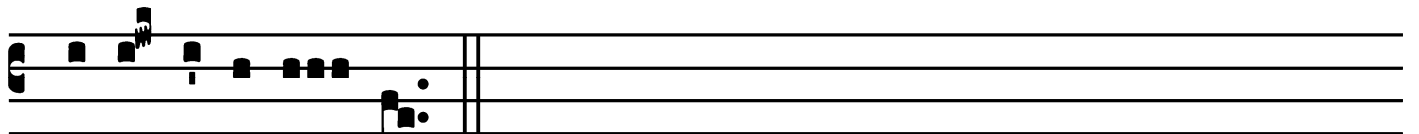
é- jus, et in cá- pi- te é- jus coróna stellárum



du- óde- cim. *Ps.* Can- tá- te Dómino cánti- cum nó-



vum : \* qui- a mi- rabí- li- a fé- cit. Gló- ri- a Pátri.



E u o u a e.

Assumption of the Blessed Virgin Mary - August 15

*Gradual*

Grad.

7.

**A**

Udi, fí-li-a, \* et ví-de,

et inclí-na áurem tú-am :

et concupí-scet rex

pulchri-tú-di-nem tú-am.

Ÿ. Tó-ta decó-ra ingréd-i-

tur fí-li-a ré-gis, textú-ræ áu-re-æ

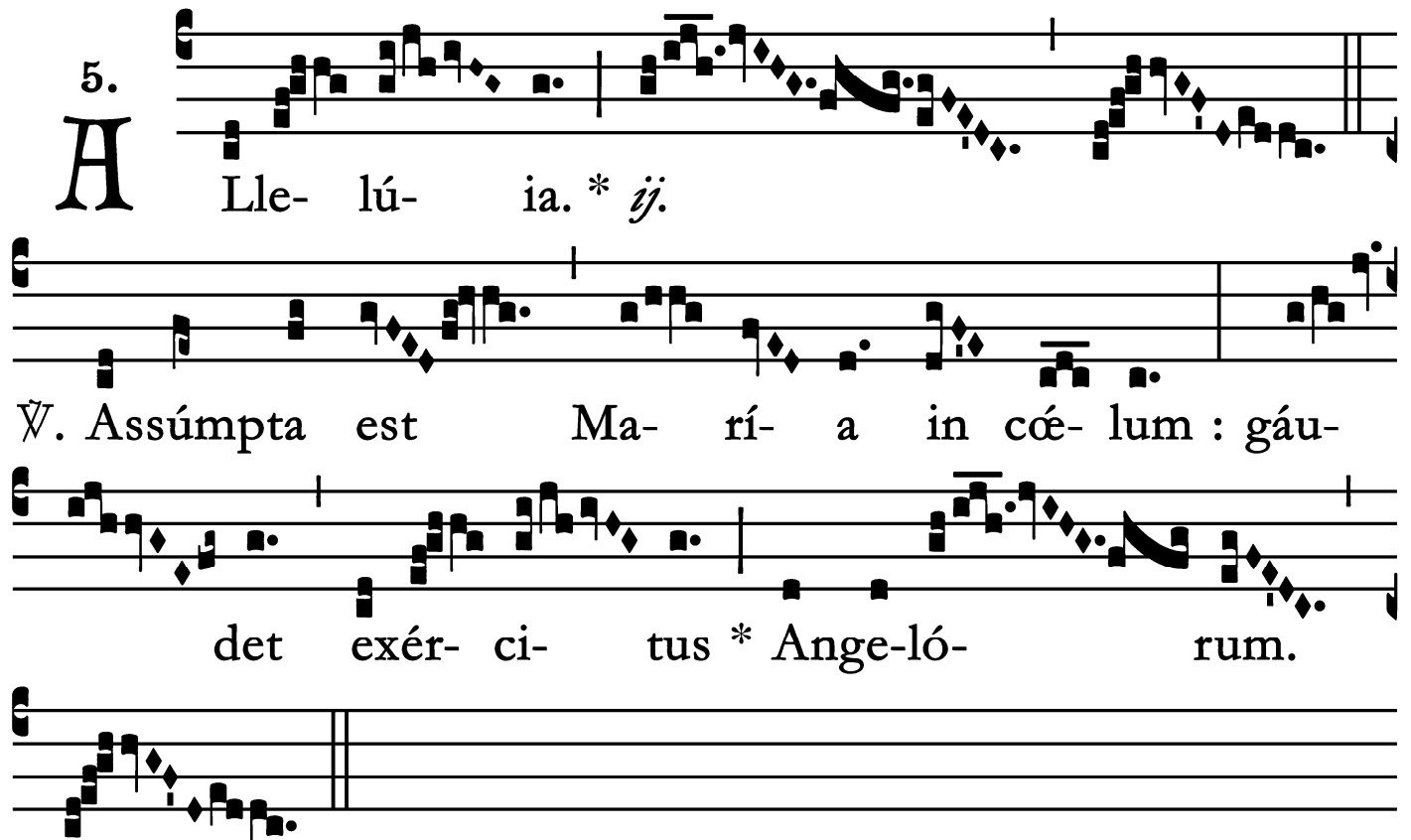
sunt amí-ctus \* é-jus.

Assumption of the Blessed Virgin Mary - August 15

*Alleluia*

5.  
**A** Lle- lú- ia. \* *ij.*

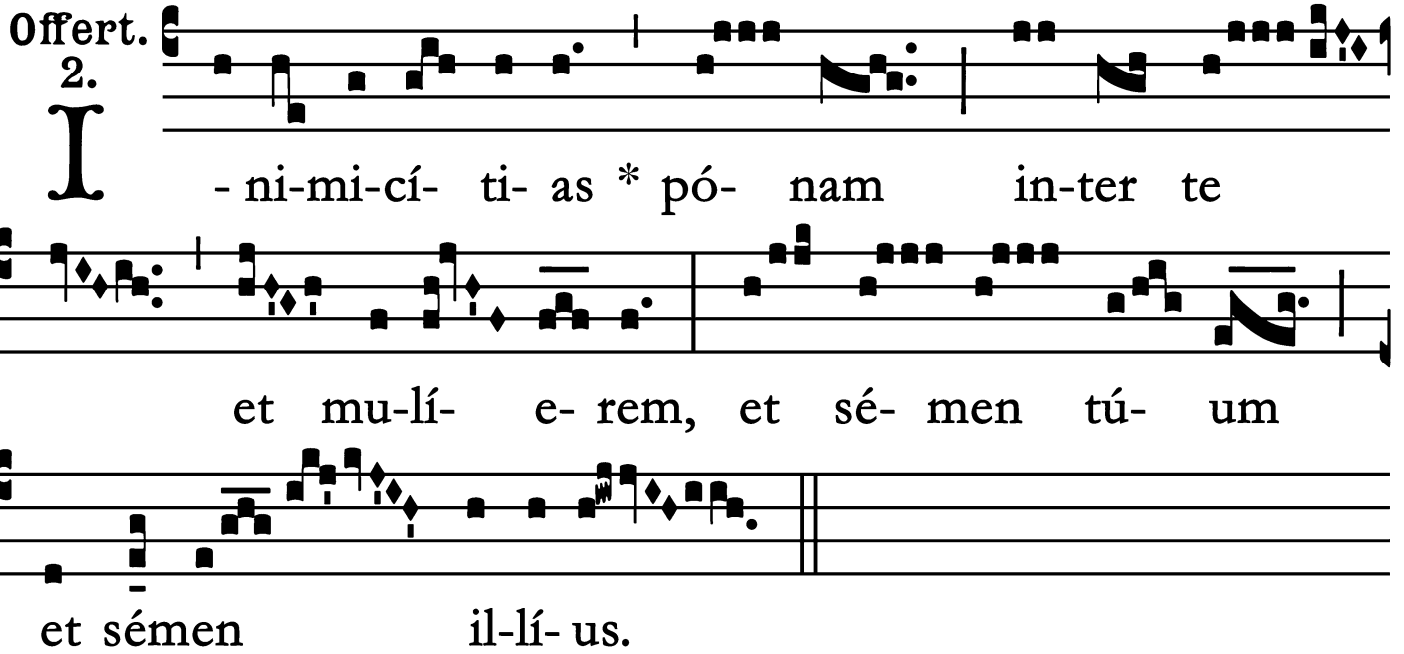
∩. Assúmpta est Ma- rí- a in có- lum : gáu-  
det exér- ci- tus \* Ange- ló- rum.



Assumption of the Blessed Virgin Mary - August 15

*Offertory*

Offert. 2.



I - ni-mi-cí- ti- as \* pó- nam in-ter te  
et mu-lí- e- rem, et sé- men tú- um  
et sémen il-lí- us.

Assumption of the Blessed Virgin Mary - August 15

*Communion*

Comm. 6.  
**B** E-á- tam me dí- cent \* ó- mnes gene- ra- ti- ó-  
nes, qui- a fé- cit mí- hi mágna qui pótens est.

