

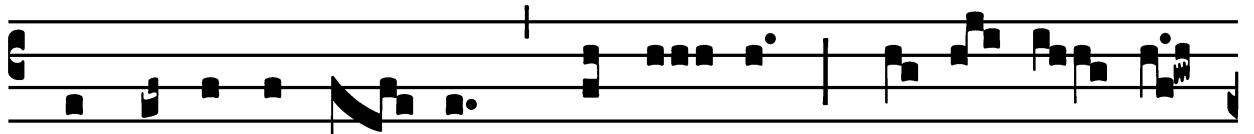
Common of a Martyr not a Bishop: Mass I

Introit

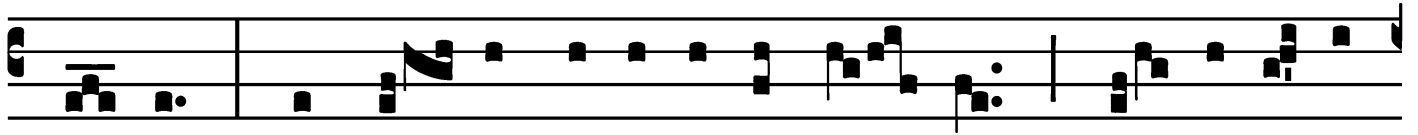
Intr.

7.

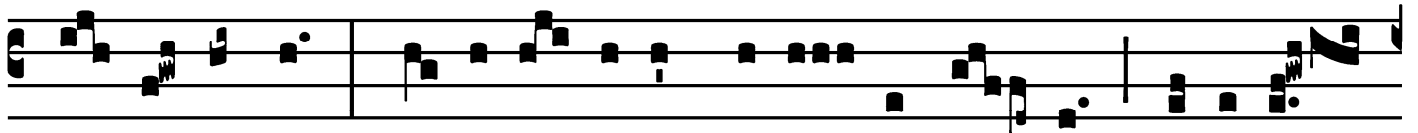
I



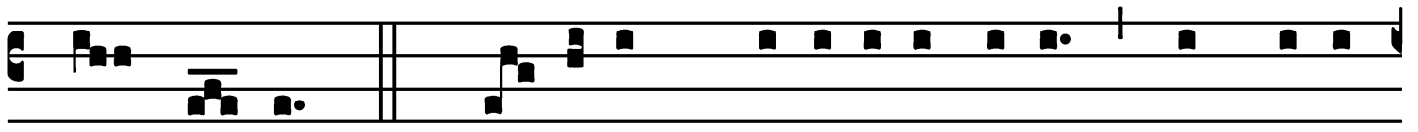
N virtú-te tú- a * Dómi- ne, læ-tá- bi- tur



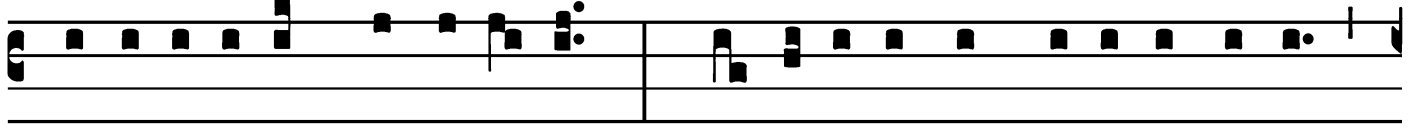
jú- stus, et su- per sa- lu- tá- re tú- um ex- sultá- bit



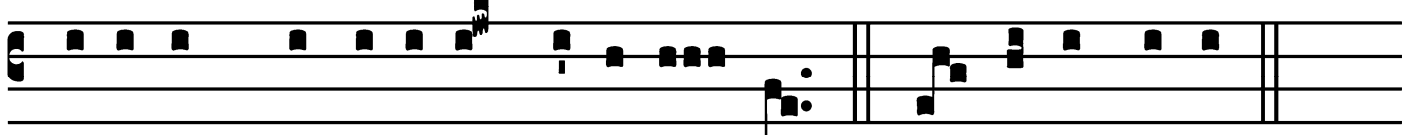
ve- hemé- nter : de- sidé- ri- um áni- mæ é- jus tribu- í-



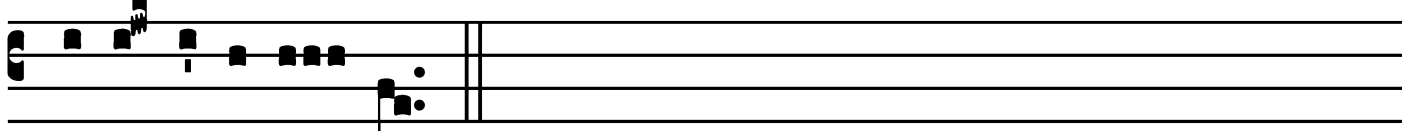
sti é- i. *Ps.* Quó- ni- am præ- vení- sti é- um in bene-



dicti- ónibus dulcé- di- nis : * po- su- í- sti in cá- pi- te é- jus



coró- nam de lá- pide pre- ti- ó- so. Gló- ri- a Pá- tri.



E u o u a e.

Common of a Martyr not a Bishop: Mass I

Gradual

Grad.

5.

B

E-á- tus vir, * qui tí-met Dó-

minum : in mandá- tis é- jus cú-

pit nimis. *Ÿ*. Pót-ens in térra

é-rit sé- men é-

jus : gene-rá-ti- o rectó-

rum * benedi- cé-tur.

Common of a Martyr not a Bishop: Mass I

Alleluia

1.
A L-le- lú-ia. * *ij.*

Ÿ. Po-su- ísti, Dó-

mi- ne, super cáput é- jus co-

ró- nam de lá- pide * pre- ti-

óso.

Common of a Martyr not a Bishop: Mass I

Tract
(Page 1 of 2)

Tract.

8.

D

Esidé- ri- um * á- nimæ é-

jus tri- bu- í- sti é- i : et vo- luntá- te la-

bi- órum é- jus non fraudásti é-

um. \forall . Quóni- am præve- ní-

sti é- um in be- nedi- cti- óne

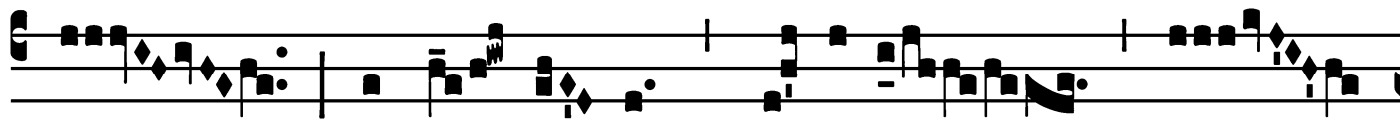
dulcé- di- nis. \forall . Posu- í- sti

su- per cá- put é- jus co- ró-

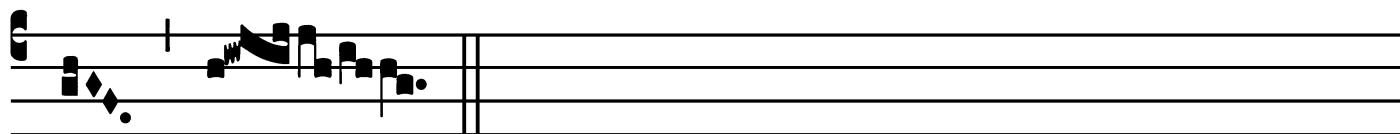
Common of a Martyr not a Bishop: Mass I

Tract

(Page 2 of 2)



nam de lá- pi- de * pre- ti- ó-

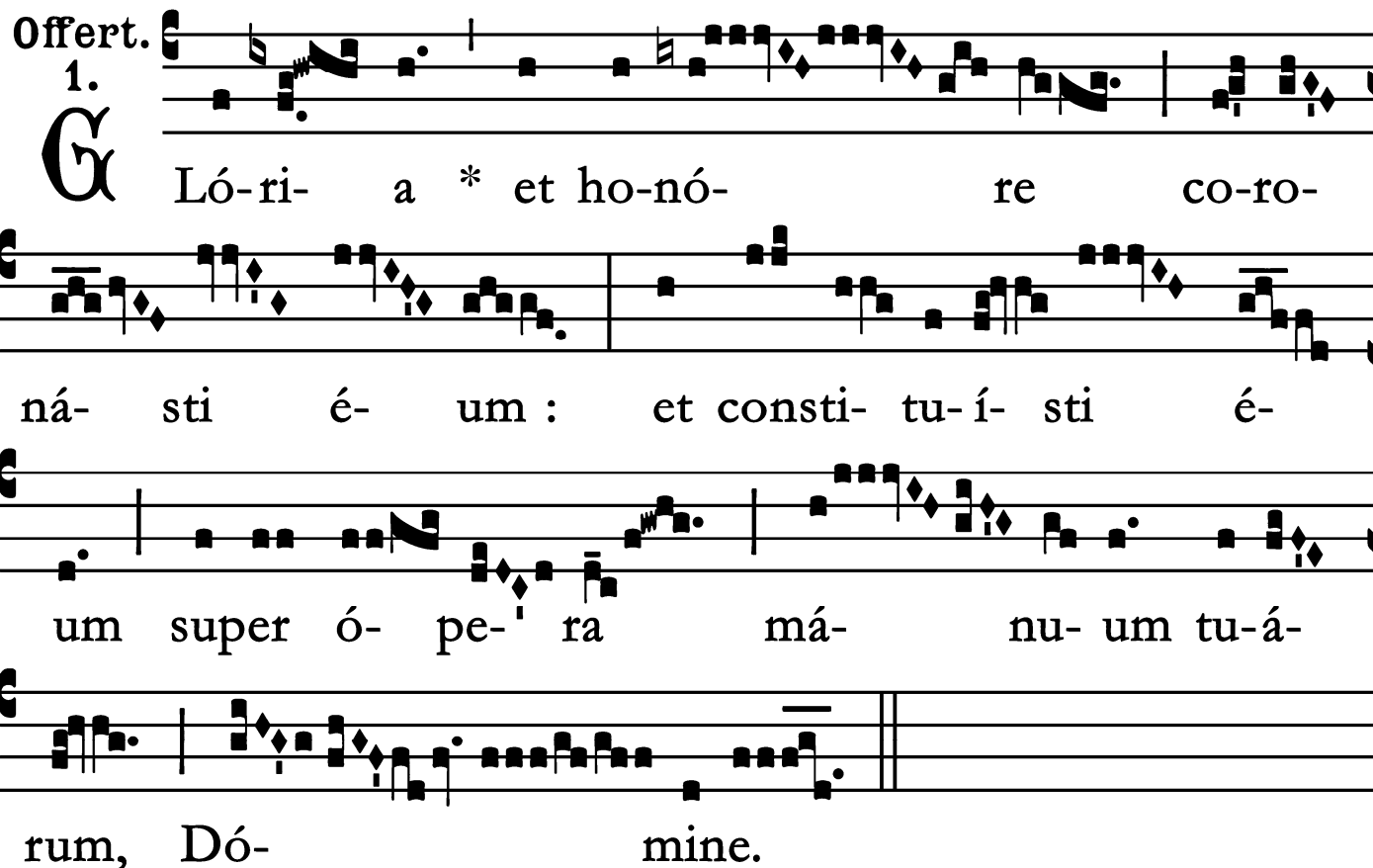


so.

Common of a Martyr not a Bishop: Mass I

Offertory

Offert. 1.



G Ló-ri- a * et ho-nó- re co-ro-
ná- sti é- um : et consti- tu- í- sti é-
um super ó- pe- ra má- nu- um tu- á-
rum, Dó- mine.

Common of a Martyr not a Bishop: Mass I

Communion

Comm.
1.



QUI vult ve-ní-re post me, * áb- neget semet-í-
psum : et tól-lat crú- cem sú- am, et sequá-tur me.

